

LEE COOPER

L O N D O N

WARRANTY CERTIFICATE / INSTRUCTION MANUAL



WATCHES

TIME SETTING

1. Bring the watch crown to the position B, and return it back to position A after you made the time setting.

TIME SETTING WITH CALENDAR

1. Bring the watch crown to the position B for calendar setting, and rotate it forward. Return it back to position A after you completed the calendar setting.

2. Bring the watch crown to the position C for time setting. Return it back to the position A after you completed the date setting.



*In case your watch has a threaded watch crown, pull it up by loosening it before the process. After you completed the process, press strongly and place it back by rotating it.

MULTI-FUNCTION TIME SETTING

B) SETTING THE DAY

1. Pull the crown out to the 2nd Click Position.
2. Turn the crown clockwise to set the day.
3. After the day has been set, push the crown back to the Normal Position.

*The day is changed during the period from 00:00AM to 05:00AM

C) SETTING THE DATE

1. Pull the crown out to the 1st Click Position.
2. Turn the crown clockwise to set the date. *If the date is set between the hours of around 9:00 PM and 1:00 AM, the date may not change on the following day.
3. After the date has been set, push the crown back to the Normal Position.

D) SETTING THE TIME

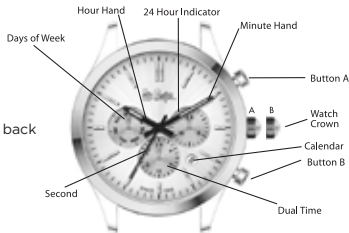
1. Pull the crown out to the 2nd Click Position.
2. Turn the crown clockwise to set hour and minute hands.
3. After the time has been set, push the crown back to the Normal Position.

E) SETTING THE DUAL TIME

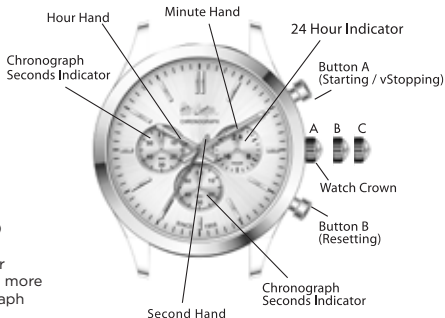
Press button "A" to set the dual time hand forward in units of 15 minutes.

Press button "B" to set the dual time hand back in units of 15 minutes.

*The dual time hand can be put rapidly by continuously pressing button "A" or "B"



CHRONOGRAPH BASIC FUNCTION



(Starting/Stopping/Resetting)

For starting; press button A, or
stopping; press button A once more
Read three different chronograph
indicator and arm.

1 hour/20 minutes/10 seconds.

For resetting;
press button B (all arms of chronograph
will return to the zero position)

TIME SETTING OF CHRONOGRAPH WATCHES

Pull the watch crown slightly outside and bring it to the position B, set the calendar by turning it forward. Pull the watch crown again outside and bring it to the position C, set the time of your watch, return it back after to the position. First pressing on button A operates the chronometer arrow, second pressing on button A stops the chronometer arrow. Button B brings the chronometer arrow to zero position.

Chronometer Minutes: informs the minutes of the chronometer seconds.

Chronometer Hour: informs the hour.

WARRANTY

Your LEECOOPER watch is under warranty for a period of (24) twenty-four months starting from the date of purchasing it from a LEECOOPER authorized sales point in accordance with the conditions and terms of this warranty agreement.

LEECOOPER warranty covers the material and manufacturing defects in a LEECOOPER watch which exist at the moment of purchasing. In order to have the warranty implemented properly, it is essential that the warranty certificate must have all relevant information such as date, product reference, as well as fully and accurately filled by the LEECOOPER seller.

WARRANTY CONDITIONS

- 1.The warranty period start on the day of delivery of the product, and is valid for 2 (two) years.
- 2.The whole product, including all the parts is within the scope of the warranty of Importer Company. This warranty covers the case of the watch, mechanism, dial, indicators, and metal bracelet.

*In case your watch has a threaded watch crown, pull it up by loosening it before the process. After you completed the process, press strongly and place it back by rotating it.

3. In the case of a defect which happens within the warranty period, the time which will be spent for repairing the watch is added into the warranty period. This period starts from the date of delivering the watch to the authorized service, or if not available, to any of the sales point, the distributor, manufacturer or importer of the watch.

4. In the event of defects which are due to installation, labor, and material faults, the repairing will be made free of charge and no money will be charged under the name of replacement part or workmanship cost.

THIS WARRANTY DOES NOT COVER

1. Batteries, glass, bracelet and belt.
2. The damages which will occur in any part of the watch by abnormal/rough usage, negligence, accident and carelessness.
3. Losing, changing, defacing and arranging of the warranty card after the date of the sale.
4. The defect which will happen using with water defined in the below chart;

- 10m = 1 atm = hand - face washing
- 30m = 3 atm = car washing
- 50m = 5 atm = taking a shower
- 100m = 10 atm = swimming
- 200m = 20 atm = diving
- 500m = 50 atm = professional diving
- 1000m = 100 atm = professional diving

5. The scratches which will occur on the exterior surface of the watch and coating due to usage.

6. Opening of the watch by an unauthorized service or repair shop.

RECOMMENDATIONS

PERIODIC CONTROL

You LEECOOPER watch should be taken to an authorized LEECOOPER service at least once in a two years like all other micro-mechanical devices.

SHOCK and VIBRATION

Your watch won't be effected by light vibrations. You should avoid hitting or dropping it to the hard surfaces since it might damage to your watch.

CHEMICAL MATERIALS

Keep your watch away from materials which have liquid and solvent properties such as alcohol and gas, cosmetic sprays, detergent, gluing, and paints.

The chemicals which have solvent properties can directly contact the coating of your watch. This might cause your watch to be considered as out of warranty.

THE PROTECTION OF BRACELET AND EXTERIOR SURFACE OF THE WATCH

Wipe your watch and the bracelet with a dry piece of cloth in order to prevent the corrosion which will occur because of dust and moisture.

MAGNETISM

Your watch is effected by high magnetism, therefore try to avoid keeping or contacting it near magnetic materials.

WARRANTY

DEALER

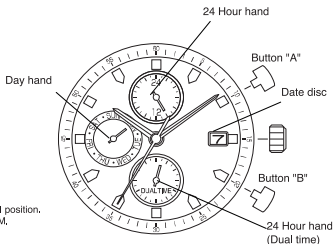
Title :
Address :
Tel No. :
Signature-Chop :

PURCHASED BY

Name-Surname :
Address :
Model No. :
Date :/...../20.....
Serial No :

JP15

A) DISPLAYS AND BUTTONS



B) SETTING THE DAY

1. Pull the crown out to the 2nd Click Position.
 2. Turn the crown clockwise to set the day.
 3. After the day has been set, push the crown back to the Normal position.
- * The day is changed during the period from 00:00AM to 05:00AM,

C) SETTING THE DATE

1. Pull the crown out to the 1st Click Position.
 2. Turn the crown clockwise to set the date.
- * If the date is set between the hours of around 9:00 PM and 1:00 AM, the date may not change on the following day.
3. After the date has been set, push the crown back to the Normal position.

D) SETTING THE TIME

1. Pull the crown out to the 2nd Click Position.
2. Turn the crown clockwise to set hour and minute hands.
3. After the time has been set, push the crown back to the Normal position.

E) SETTING THE DUAL TIME

Press button "A" to set the dual time hand forward in units of 15 minutes.
Press button "B" to set the dual time hand back in units of 15 minutes.
*The dual time hand can be put rapidly by continuously pressing button "A" or "B".

JP25

A) DISPLAYS AND BUTTONS

B) SETTING THE DAY

1. Pull the crown out to the 2nd Click Position.
 2. Turn the crown clockwise to set the day.
 3. After the day has been set, push the crown back to the Normal position.
- * The day is changed during the period from 00:00AM to 05:00AM.

C) SETTING THE DATE

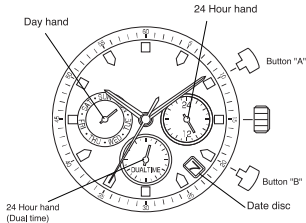
1. Pull the crown out to the 1st Click Position.
 2. Turn the crown clockwise to set the date.
- * If the date is set between the hours of around 9:00 PM and 1:00 AM, the date may not change on the following day.
3. After the date has been set, push the crown back to the Normal position.

D) SETTING THE TIME

1. Pull the crown out to the 2nd Click Position.
2. Turn the crown clockwise to set hour and minute hands.
3. After the time has been set, push the crown back to the Normal position.

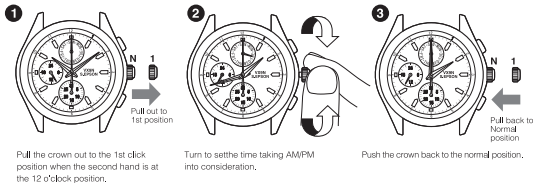
E) SETTING THE DUAL TIME

Press button "A" to set the dual time hand forward in units of 15 minutes.
Press button "B" to set the dual time hand back in units of 15 minutes.
*The dual time hand can be put rapidly by continuously pressing button "A" or "B".



VX9N

How to set time



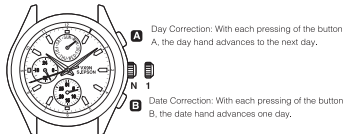
Advance Setting Technique

* The 24-hour hand moves correspondingly with the hour hand.

* When setting the hour hand, check that the 24-hour hand is correctly set.

* When setting the minute hand, advance it 4 to 5 minutes ahead of the desired time and then turn it back to the exact time.

How set date and day of the week



Note

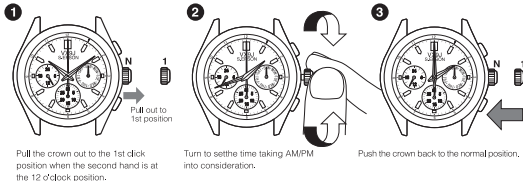
* Do not set the date and the day hands between 9:00p.m. and 4:00a.m. Otherwise, they may not move properly.

* While setting the date and the day hands, check that they move properly in one-day increments.

* It is necessary to adjust the date on the first day after a 30-day month and February.

VX9J

How to set time



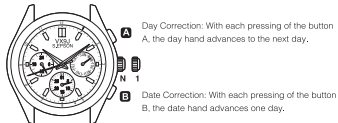
Advance Setting Technique

* The 24-hour hand moves correspondingly with the hour hand.

*When setting the hour hand, check that the 24-hour hand is correctly set.

*When setting the minute hand, advance it 4 to 5 minutes ahead of the desired time and then turn it back to the exact time.

How set date and day of the week



Note

*Do not set the date and the dayhands between 9:00p.m. and 4:00a.m. Otherwise, they may not move properly.

*While setting the date and the day hands, check that they move properly in one-day increments.

*It is necessary to adjust the date on the first day after a 30-day month and February.

6P29

Special Features Of Your Watch

*An Analog Quarts watch which was designed with multi hands, to enhanced perfection. The hands in the small displays show Day,,date, and 24 hour time.

1-

Setting The Time/day

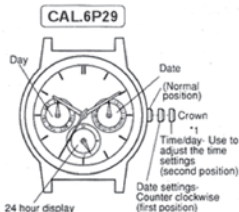
Please make sure you have correctly set am/pm before you start to adjust the time.

pull the crown out to the 2nd position when the second hand points to 0 (12o'clock)..

After setting the time, use a time signal to synchronize the watch by pushing the Crown to the normal position to start the second hand going.

*You can not quickiy adjust the day of the week. In order to adjust the day, you must advance the hour hand by 24 hours per day.

*Always rotate the hour and minute hands in a clockwise direction to set the day. If you rotate the hands in a counter-clockwise direction, it may not always change the day correctly



2-

Setting the date

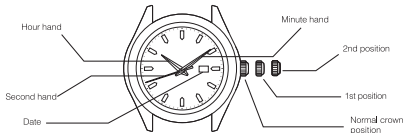
*Pull the Crown out to the first position.

*Turn the crown to left to set the date. You can not adjust the date between approximately 9pm and 0:30am.

*After setting the time/date/day of the week, please push the Crown back to it's normal position before using.

INSTRUCTION MANUAL

A) DISPLAY



*Date position may be located at different position depends on models.

B) SETTING THE TIME

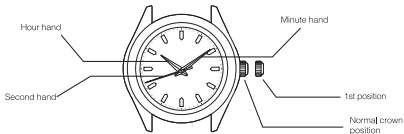
1. Pull the crown out to the 2nd position.
2. Turn the crown to set hour and minute hands.
3. When the crown is pushed back to the normal position, second hand begins to run.

C) SETTING THE DATE

1. Pull the crown out to the 1st position.
 2. Turn the crown counter-clockwise to set the date.
- * If the date is set between the hours of around 9:00 PM and 1:00 AM,
the date may not change the following day.
3. After the date has been set, push the crown back to the normal position.

INSTRUCTION MANUAL

A) DISPLAY



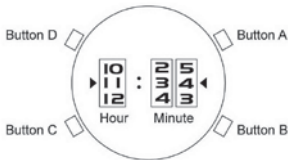
B) SETTING THE TIME

Normal crown position

1. Pull the crown out to the 1st position.
2. Turn the crown to set hour and minute hands.
3. When the crown is pushed back to the normal position, second hand begins to run.

DRUM ROLLER WATCH INSTRUCTION MANUAL

LC07002



Step 1. Roller Positioning - Adjust time position at < 12:00 >

1. Press button D and hold for 2 seconds the rollers will start rolling and stop at random position. Using button A, B, C to control the position of the rollers.
2. Press button C to advance to 12 o'clock position.
3. Press button A, B to advance to zero (0) position. (you can hold the button to speed up the motion)
4. After adjusted to 12:00 position press button D or wait for 15 seconds the rollers will be stopped at random position.

Step 2. Present Time Setting

- 1.Press button C and hold for 2 second, the hour digit will move for signal.
- 2.Press button C to advance the present Hour time.
- 3.Press button A to advance the first digit Minutes time.
- 4.Press button B to advance the second digit Minutes time.
(you can hold the button to speed up the motion)
- 5.After adjusted, press button D or wait 15 second, to confirm the present time correct.

Extra:

Demo Animation Mode

Press button A , The roller will scrol 2 round to demo the drum moving, It w ill back to normal time once finished .

Temporarily Stop Timing Mode

Press button B three times in shortly, The roller stop at 12:00 until any press Once press any button, the watch will back to normal present timing.

*When the 4 push buttons are pressed accidentally without prescribed orders, time can be altered. If that happens, please reset the "Time".

- Drum Roller Quartz Movement
- Battery type: LR44 x 2
- Battery life: 18 month

DRUM ROLLER WATCH OPERATING INSTRUCTIONS

LC07003

Roller Time Setting

1. Press and hold the B button for 2 seconds, the left roller (Hour) will start rotating and stop. Use the A button to adjust the roller display to "12".
2. Complete the above steps, press B once, the right roller (Minutes) will start rotating and stop. Use the A button to adjust the roller display to "00".
3. Complete the above step, press B once, the two rollers will start rotating and stop.
4. After the two rollers stopped, use the A button to adjust the left roller (Hour) to the actual "Hour" time. 5. After completing the "hour" setting, press the B button once, the right roller (Minutes) will start rotating and stop, use the A button to adjust the right roller (Minutes) to the actual set "Minute" time.
6. When finished, press B once, the two rollers will rotate and stop, Roller time setting completed.



Analogue time setting

1.Pull C (Watch crown) out, correct the time as required, and then push C back to original position.

Stopwatch function operation

1.In normal time mode, press A to enter the Stopwatch mode, the red light at the bottom left start flashing , and the roller on the left shows "12:00". Now ready for counting!

2.Press A start counting, the green light at the bottom right start flashing, and the right roller will forward at the same time in every second.

3.After 59 seconds, the roller stopped forward in second and change to forward in minutes.

Stopwatch function is base on minutes as unit, the first 59 seconds do not have stop watch function. To reset to the new stopwatch mode within 1 minute, press A .

To stop the counting over 1 minute press A , right roller will show the minute counted To reset to stop watch mode press B once , press B again back to normal time model

The longest counting range is 60 minutes, then the timer will stop and return to normal time mode, the green light will stop flashing .

(Stop watch function consumes more power and will affect battery life)

Demostration mode

In normal time mode, press B button. The hour and minutes wheel will rotating for 15 seconds to 20

Specifications :

QUARTZ ACCURACY

+ 1 -30seconds per month at normal-temp

OPERATING CUREENT STAND-BY <3uA

BATTERY TYPE LR44(2PCS) 1.5V 115MAH

BATTERY SIZE

BATTERY LIFE JEWEL

MODULE SIZE 11.6*5.4MM

>18 months (Based on 30 minutes CHRONO/DJ

O Jewel

As per ASSY-DWG

Drum roller watch operating instructions

LC07004

Roller time setting

1. Press and hold the B button for 2 seconds, the left roller (Hour) will start rotating and stop. Use the A button to adjust the roller display to "12".
2. Complete the above steps, press B once, the right roller (Minutes) will start rotating and stop. Use the A button to adjust the roller display to "00".
3. Complete the above step, press B once, the two rollers will start rotating and stop.
4. After the two rollers stopped, use the A button to adjust the left roller (Hour) to the actual "Hour" time.
5. After completing the "hour" setting, press the B button once, the right roller (Minutes) will start rotating and stop, use the A button to adjust the right roller (Minutes) to the actual set "Minute" time.
6. When finished, press B once, the two rollers will rotate and stop, Roller time setting completed.

Analogue time setting

- Press "C" for 2 seconds, minute hands start to move clockwise. Continue to press "C" for 2 seconds then release, minute hand will move on its own as well as the hour hand. When approaching the desired time press "C" and then fine tune by pressing "C" repeatedly. Release all buttons, time is set in 15 seconds.
- Stopwatch function operation



1. In normal time mode, press A to enter the Stopwatch mode, the red light at the bottom left start flashing , and the roller on the left shows "12 :00". Now ready for counting!

2. Press A start counting, the green light at the bottom right start flashing, and the right roller will forward at the same time in every second.

3. After 59 seconds, the roller stopped forward in second and change to forward in minutes. Stopwatch function is base on minutes as unit, the first 59 seconds do not have stop watch function . To reset to the new stopwatch mode within 1 minute, press A .

To stop the counting over 1 minute press A , right roller will show the minute counted To reset to stop watch mode press B once , press B again back to normal time model

The longest counting range is 60 minutes, then the timer will stop and return to normal time mode, the green light will stop flashing .

(Stop watch function consumes more power and will affect battery life)

Demostration mode

In normal time mode, press B button. The hour and minutes wheel will rotating for 15 seconds to 20

Specifications :

QUARTZ ACCU+ I -30seconds per month at normal-temp OPERATING CUREENT CHRONO <100uA
 OPERATING CUREENT STAND-BY <3uA
 BATTERY TYPE
 BATTERY SIZE BATTERY LIFE JEWEL
 OPERATION TEMPERATURE
 MODULE SIZE
 LR44(2PCS) 1.5V 115MAH
 11.6*5.4MM
 >18 months (Based on 30 minutes CHRONO/DAY)
 0 Jewel
 -5 to +50 C
 As per ASSY-DWG
 EP3944V02 EP3939V02



WATCHES

"Manufactured by Arıkan Saat A.Ş. under licence from Red Diamond Holdings S.à.r.l" ®
registered trade marks © 2007 Red Diamond Holdings S.à.r.l and its affiliates."

www.leecoopertime.com